

SELECTING A CONTROL BAR

To determine the 7- or 8-digit configured part number for a standard control bar, follow directions 1-6 below and use the information in the **CONTROL BAR PART NUMBERING SYSTEM CHART** below.

1. The first 3 digits for all control bars are MCB or USC.
2. The 4th digit determines the size of the bar enclosure.
3. The 5th digit determines the type of run/inch button provided.
4. The 6th digit determines the type of emergency-stop button provided.
5. The 7th digit determines the type of top-stop or return button provided.
6. The 8th digit will indicate the type of modifier provided; e.g., supervisory selector switch, indicator light, and prior-action push button.

CONTROL BAR PART NUMBERING SYSTEM CHART	
<div> <div> CONTROL BAR MCB — Universal Control Bar USC — Control Bar for Use With USC000 Multiple-Operator Junction Box Only </div> <div> ENCLOSURE SIZE (4" x 4" x X) 1 — 18" — Run Buttons on Ends of Enclosure 2 — 24" — Run Buttons on Ends of Enclosure 3 — 30" — All Operators on Front of Enclosure 4 — 36" — All Operators on Front of Enclosure </div> <div> RUN BUTTON OPERATOR TYPE 1 — Rees Black Palm Button With Rockford Systems Guards—Front Only 2 — A-B Articulated Palm Button With A-B Guards—Front Only 3 — N/A 4 — IDEC Green Push Button With IDEC Guard 5 — A-B Zero-Force Touch Buttons With Guards (90-264 VAC) 6 — Banner Opto-Touch Buttons With Guards (20-30 VAC/DC) 7 — Mushroom Push Buttons With Guards (SQ-D) 8 — Rees Chrome Light-Push Button With Rockford Systems Guards—Front Only </div> </div>	
XXX - X X X - X ↑ ↑ ↑ ↑ ↑ ↑ CONTROL BAR ENCLOSURE SIZE RUN BUTTON OPERATOR TYPE EMERGENCY-STOP TYPE TOP-STOP OR RETURN TYPE MODIFIER	
	MODIFIER 0 — None 1 — Includes Station Off/On Selector Switch and Indicator 2 — Includes Prior-Action Push Button 3 — Includes Station Off/On Selector Switch, Indicator, and Prior Action Push Button 4 — Includes Lighted Prior-Action Push Button (SSC) 5 — Includes Station Off/On Selector Switch, Indicator, and Lighted Prior-Action Push Button
	TOP-STOP OR RETURN TYPE 0 — None 1 — Rees Yellow Top-Stop Palm Button (1 NO and 1 NC) 2 — A-B Yellow Top-Stop 40 mm Mushroom Palm Button (1 NO and 1 NC) 3 — Rees Yellow Return Palm Button (1 NO and 1 NC) 4 — A-B Yellow Return 40 mm Mushroom Palm Button (1 NO and 1 NC)
	EMERGENCY-STOP TYPE 1 — Rees Red Palm Button—Latch-Out Type 2 — A-B Red 40 mm Two-Position—Twist-to-Return

OPERATOR AND EMERGENCY-STOP TYPE BUTTONS FOR CONTROL BARS



Rees Black Palm Button
With RSI Guard



A-B Articulated Palm
Button With A-B Guard



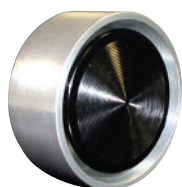
IDEC Button With Guard



A-B Zero-Force Touch
Button With Guard



Opto-Touch Button
with Guard



Mushroom Push Button
With Guard (SQ-D)



Rees Chrome Light-Push
Button With RSI Guard



Rees Red E-Stop
Button—Latch-Out



A-B Red Two-Position
E-Stop—Twist-to-Return

All buttons have 1 NO and 1 NC contact arrangement.